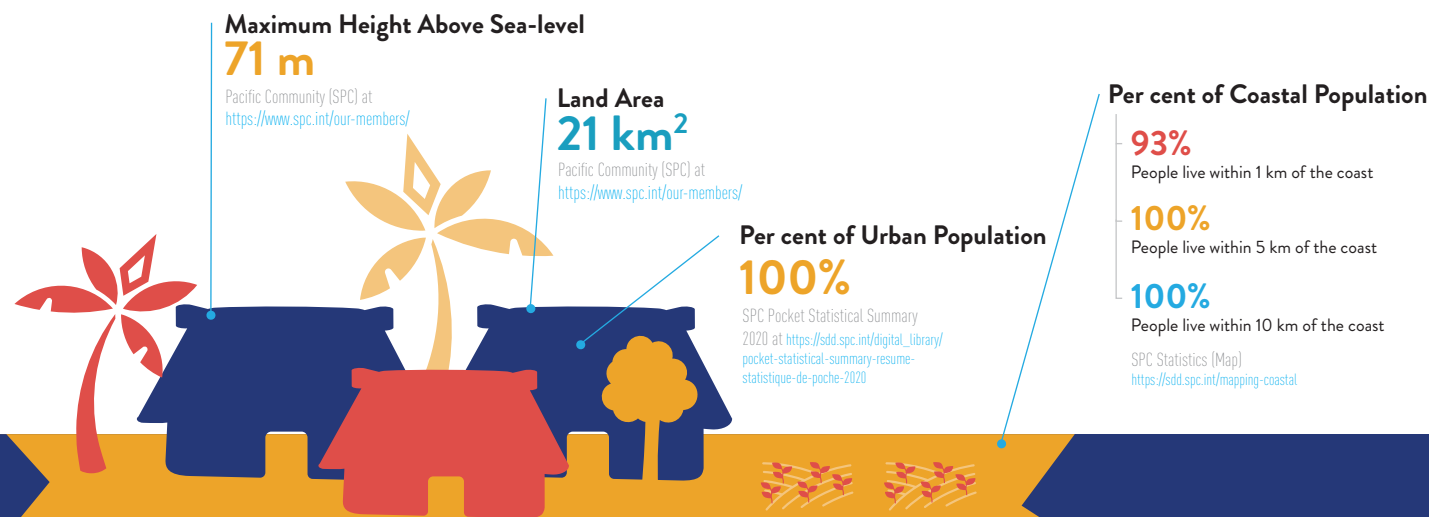


# PACIFIC RISK PROFILE NAURU



## Basic Country Statistics



**Total Population**  
(2020 Estimate)

**11,691**  
persons



**Total Male & Female Population**  
(2020 Estimate)

**Male**  
**5,936**  
persons or 49.27%

**Female**  
**5,755**  
persons or 49.23%

SPC Statistics (Population) at <https://sdd.spc.int/topic/population>



**Disability Prevalence**

**5.1%**

UNESCOAP (2019) Disability at a Glance at <https://www.unescap.org/publications/disability-glance-2019>

**Gross Domestic Product (GDP) per Capita**

**US\$11,666**  
(2018)

SPC Pocket Statistical Summary 2020 at [https://sdd.spc.int/digital\\_library/pocket-statistical-summary-resume-statistique-de-poche-2020](https://sdd.spc.int/digital_library/pocket-statistical-summary-resume-statistique-de-poche-2020)

**Per cent of Children, Youth and Elderly**

**Children (<14)**  
**37%**

**Youth (15-24)**  
**18%**

**Elderly (60+)**  
**5%**



**Population Density**

**557** persons/km<sup>2</sup>

SPC Pocket Statistical Summary 2020 at [https://sdd.spc.int/digital\\_library/pocket-statistical-summary-resume-statistique-de-poche-2020](https://sdd.spc.int/digital_library/pocket-statistical-summary-resume-statistique-de-poche-2020)

**Women's Share of Managerial Positions**

**35.6%**

**Women's Labour Force Participation Rate**

**49%**

**Women's Share of Wage Employment in the Non-agriculture Sector**

**37.6%**

**Ever-Partnered Women Experienced Violence by Intimate Partner**

**48%**

ADB (2016) Gender Statistics for the Pacific and Timor-Leste at <https://www.adb.org/publications/gender-statistics-pacific-and-timor-lesle>

Pacific Risk Profile is a snapshot of climate and disaster risk information that is collected from credible open data sources. It is intended to provide DFAT program managers and implementing partners with easy access to essential risk information. When employing risk information in specific program contexts, however, it is strongly encouraged to study the original risk information sources or even undertake proper risk assessments.

For more information or other technical support, you may contact the Australia Pacific Climate Partnership Support Unit at [helpdesk@apclimatepartnership.com.au](mailto:helpdesk@apclimatepartnership.com.au).

**Published in July 2021**

## Hazard Likelihood



**Landslide**  
Very Low Likelihood



**Tsunami**  
Medium Likelihood



**Coastal Flood**  
High Likelihood



**Wildfire**  
Very Low Likelihood

### Legend

Very low	Medium
Low	High

ThinkHazard! at <https://thinkhazard.org/en/report/173-nauru>

## Major Disasters 2011-2020

**Nauru does not experience tropical cyclones**

**No historical records of earthquake or tsunami damage in Nauru**

Republic of Nauru (2015) Republic of Nauru Framework for Climate Change Adaptation and Disaster Risk Reduction (RONAdapt) at [https://reliefweb.int/sites/reliefweb.int/files/resources/NRU\\_2015\\_RONAdapt\\_Framework.pdf](https://reliefweb.int/sites/reliefweb.int/files/resources/NRU_2015_RONAdapt_Framework.pdf)

## Risk Index



**INFORM**  
**Covid-19 Risk**

Nauru's risk level is high when assessing the potential humanitarian impacts of Covid-19 in combination with other pre-existing crisis risks.

INFORM Covid-19 Warning (beta version) at <https://dirmkc.jrc.ec.europa.eu/inform-index/INFORM-Covid-19/INFORM-Covid-19-Warning-beta-version>

## Climate Projection

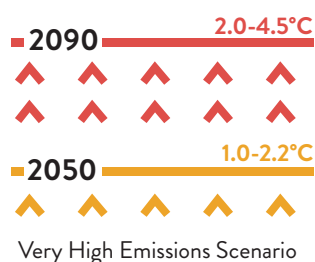


### Rainfall

Mean rainfall is projected to increase, along with more extreme rain events

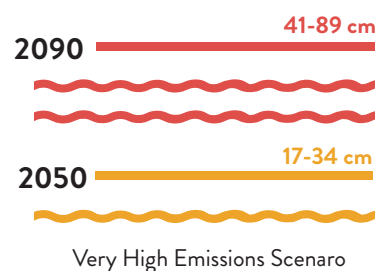
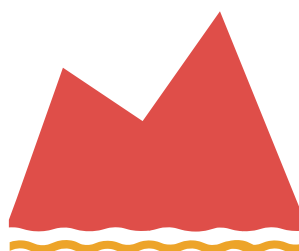
### Temperature

Annual mean temperatures and extremely high daily temperatures will continue to rise.



### Sea-level Rise

Sea level is expected to continue to rise.



### Ocean Acidification



Ocean acidification is expected to continue.

### Coral Bleaching Risk



The risk of coral bleaching is expected to increase.

### El Niño / La Niña



El Niño and La Niña events will continue to occur in the future.

In Nauru, **El Niño** events tend to bring **warmer, wetter conditions** than normal, while **La Niña** events are associated with a delayed onset of the wet season and **drier than normal** conditions, often resulting in an extended drought.